



FORTIS BC GAS MAIN INSTALLATION

MARBLE HILL ROAD

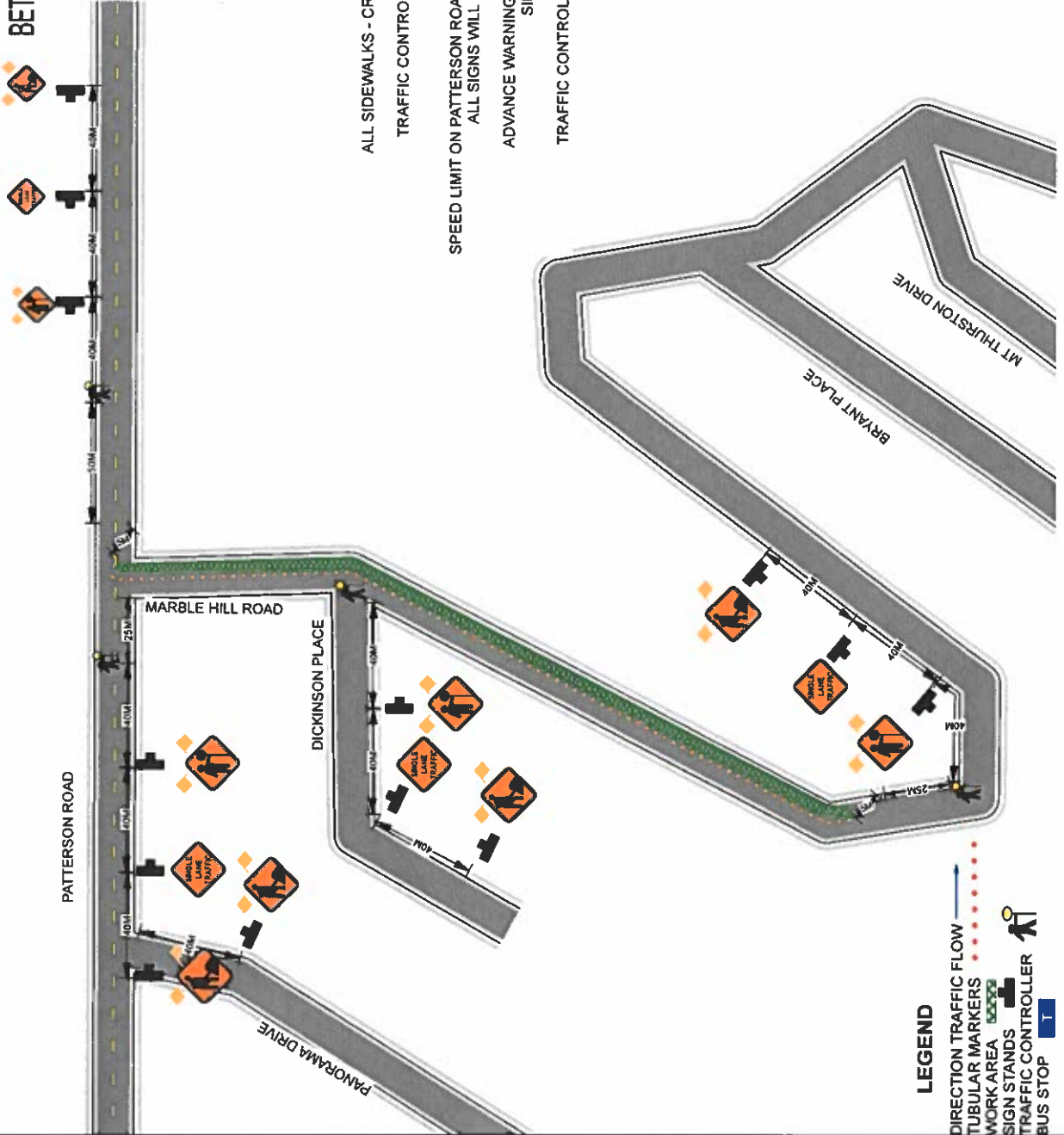
BETWEEN PATTERSON ROAD AND TACOMA PLACE

JOB# 31144090

DRAWING 1

MARCH / APRIL 2021

HOURS OF OPERATION 7:00AM - 5:00PM



NOTE

ALL SIDEWALKS - CROSSWALKS AND BUS STOPS WILL REMAIN OPEN
 TRAFFIC CONTROL WILL ASSIST WITH DRIVEWAYS AFFECTED BY
 WORK ZONE CLOSURE

SPEED LIMIT ON PATTERSON ROAD, MARBLE ROAD AND ALL SIDE STREETS IS 50 KM PER HOUR
 ALL SIGNS WILL BE PLACED ON TRIPOD STANDS WITH FLAGS

ADVANCE WARNING SIGNS WILL BE PLACED ON ALL INTERSECTING
 SIDE STREETS WHEN REQUIRED

TRAFFIC CONTROL WILL USE TWO WAY RADIOS TO COMMUNICATE

LEGEND

- DIRECTION TRAFFIC FLOW
- TUBULAR MARKERS
- WORK AREA
- SIGN STANDS
- TRAFFIC CONTROLLER
- BUS STOP



FORTIS BC GAS MAIN INSTALLATION
MARBLE HILL ROAD
BETWEEN PATTERSON ROAD AND TACOMA PLACE
JOB# 31144090
DRAWING 2

MARCH / APRIL 2021
HOURS OF OPERATION 7:00AM - 5:00PM

NOTE

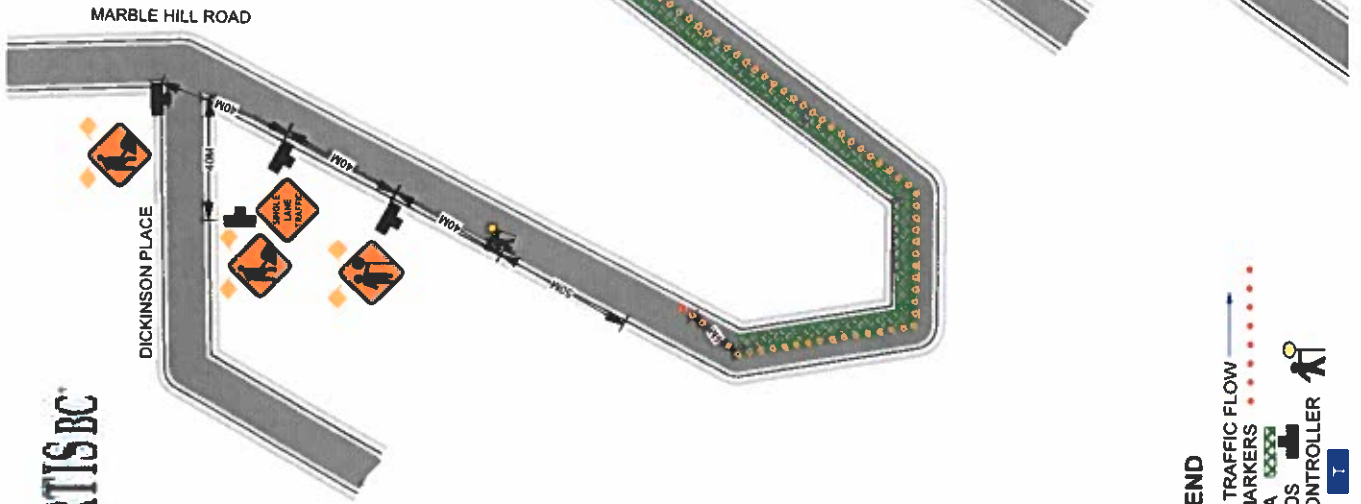
ALL SIDEWALKS - CROSSWALKS AND BUS STOPS WILL REMAIN OPEN

TRAFFIC CONTROL WILL ASSIST WITH DRIVEWAYS AFFECTED BY WORK ZONE CLOSURE

SPEED LIMIT ON PATTERSON ROAD, MARBLE ROAD AND ALL SIDE STREETS IS 50 KM PER HOUR
ALL SIGNS WILL BE PLACED ON TRIPOD STANDS WITH FLAGS

ADVANCE WARNING SIGNS WILL BE PLACED ON ALL INTERSECTING SIDE STREETS WHEN REQUIRED

TRAFFIC CONTROL WILL USE TWO WAY RADIOS TO COMMUNICATE



LEGEND

- DIRECTION, TRAFFIC FLOW
- TUBULAR MARKERS
- WORK AREA
- SIGN STANDS
- TRAFFIC CONTROLLER
- BUS STOP





FORTIS BC GAS MAIN INSTALLATION
MARBLE HILL ROAD
BETWEEN PATTERSON ROAD AND TACOMA PLACE
JOB# 31144090
DRAWING 3

MARCH / APRIL 2021
HOURS OF OPERATION 7:00AM - 5:00PM



NOTE:

- ALL SIDEWALKS - CROSSWALKS AND BUS STOPS WILL REMAIN OPEN
- TRAFFIC CONTROL WILL ASSIST WITH DRIVEWAYS AFFECTED BY WORK ZONE CLOSURE
- SPEED LIMIT ON PATTERSON ROAD, MARBLE ROAD AND ALL SIDE STREETS IS 50 KM PER HOUR
- ALL SIGNS WILL BE PLACED ON TRIPOD STANDS WITH FLAGS
- ADVANCE WARNING SIGNS WILL BE PLACED ON ALL INTERSECTING SIDE STREETS WHEN REQUIRED
- TRAFFIC CONTROL WILL USE TWO WAY RADIOS TO COMMUNICATE

LEGEND

- DIRECTION TRAFFIC FLOW
- TUBULAR MARKERS
- WORK AREA
- SIGN STANDS
- TRAFFIC CONTROLLER
- BUS STOP

